

# THE HOMER BUILDING

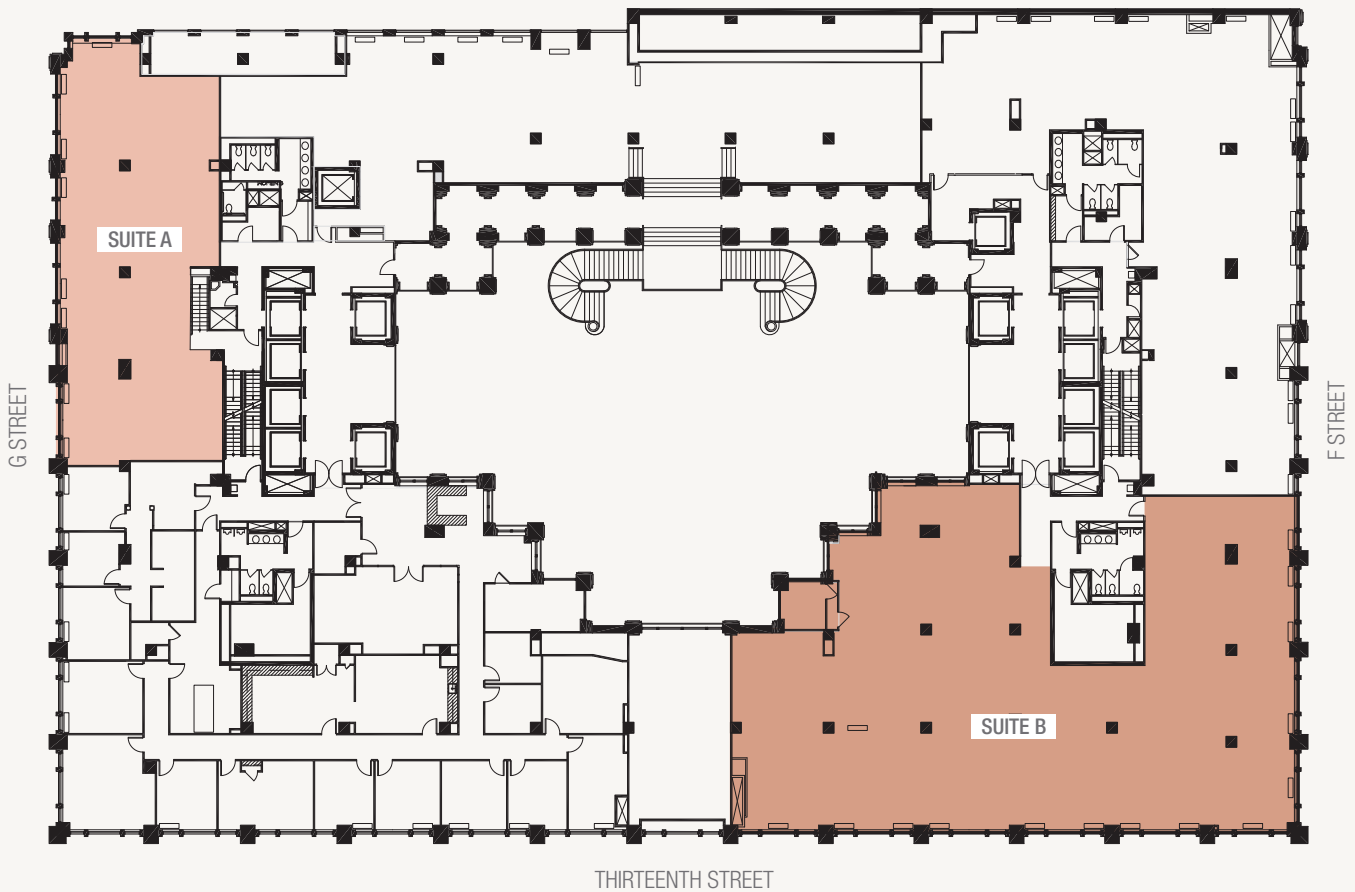
## SECOND FLOOR

SUITE A: 3,666 SF | Available Immediately | 5–10 Years

SUITE B: 8,672 SF | Available Immediately | 5–10 Years

☞ Prime elevator exposure

☞ Three sides of windows



THE HOMER BUILDING | 601 THIRTEENTH STREET, NW  
WIL PACE | 202.624.8649 | [WPACE@AKRIDGE.COM](mailto:WPACE@AKRIDGE.COM)  
TIM MCCARTY | 202.207.3949 | [TMCCARTY@AKRIDGE.COM](mailto:TMCCARTY@AKRIDGE.COM)

**AKRIDGE**  
*Invested.*